

# Rivers Edge

ON THE WATERFRONT

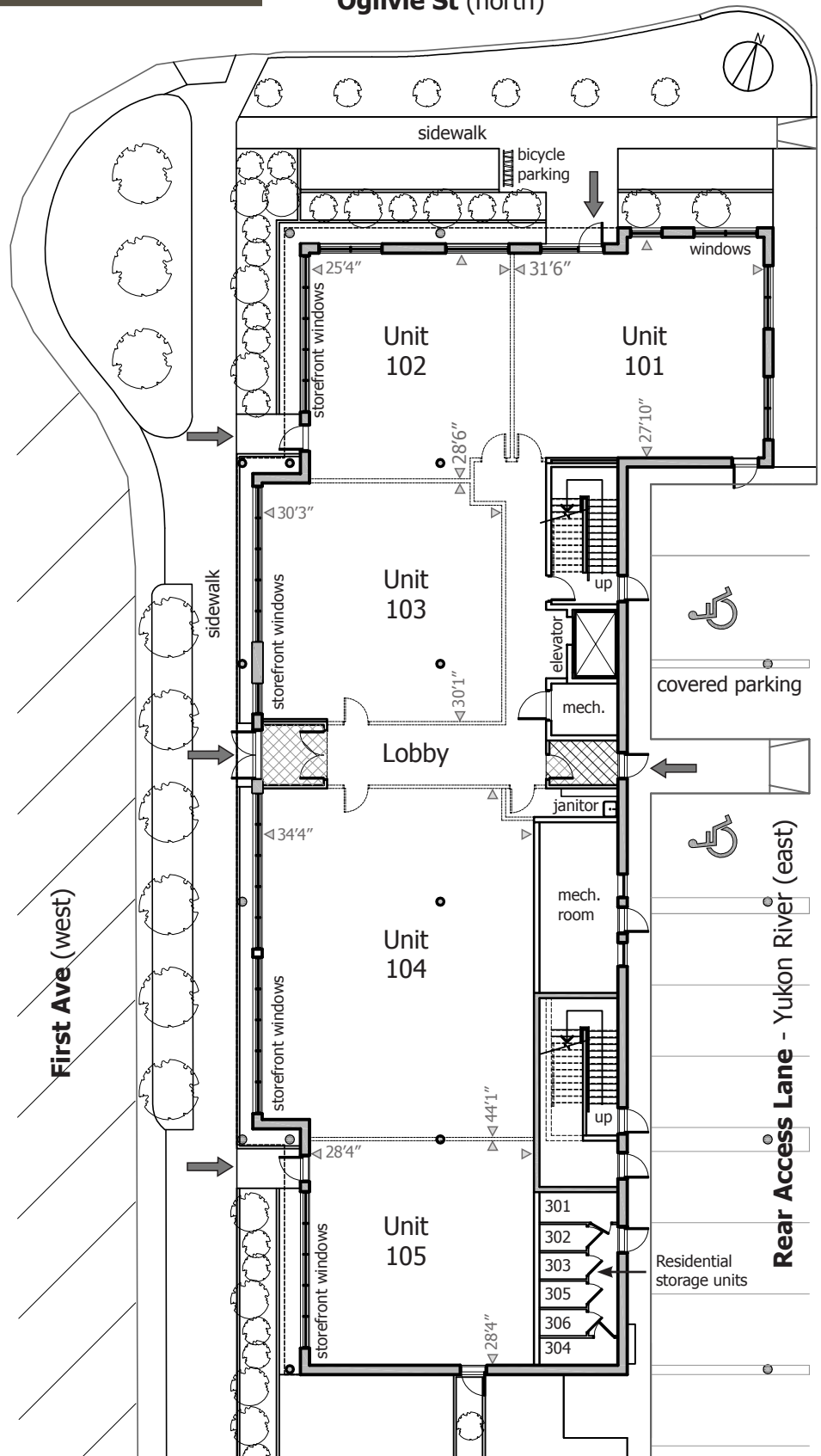
**PARK VIEW**  
Phase 1

Ogilvie St (north)

## Ground Floor

Commercial/Retail Units

- Unit 101 area: ±891 sq.ft.
- Unit 102 area: ±735 sq.ft.
- Unit 103 area: ±918 sq.ft.
- Unit 104 area: ±1,490 sq.ft.
- Unit 105 area: ±809 sq.ft.



River's Edge Partnership

The developer reserves the right to make modifications and changes should they be necessary.